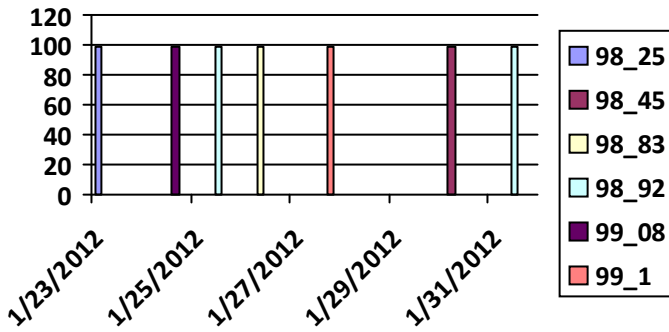


1	2	3	4	5	6	7
8	9	10	11	12	13	14
15	16	17	18	19	20	21
22	23	24	25	26	27	28
29	30	31				

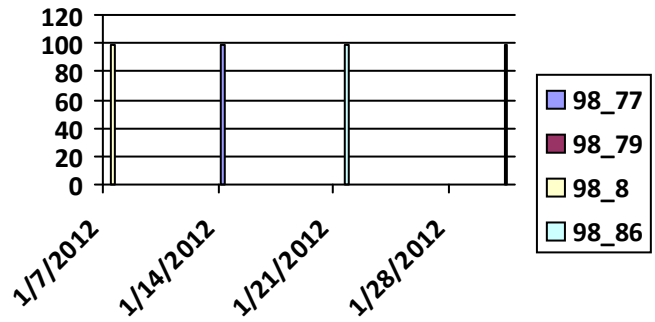
**Single Space Meter Operability Analysis**

Daily Operability		4 Week Average Operability		90 Day Overall Operability
Date	Operable	Week	Operable	
1/23/2012	98.25	1/7/2012	98.80	<p><b>Working: 98.81 %</b></p> <p><b>Not Working: 1.19 %</b></p>
1/24/2012	99.08	1/31/2012	98.79	
1/25/2012	98.92	1/21/2012	98.86	
1/26/2012	98.83	1/14/2012	98.77	
1/27/2012	99.10			
1/30/2012	98.45			
1/31/2012	98.92			

**Daily Operability**



**4 Week Average**



**Contract Baseline Required: 97 Operable**

**Total District Single Space Parking Meters 14108**

Contract Rules Applied to Meter Operability Analysis:

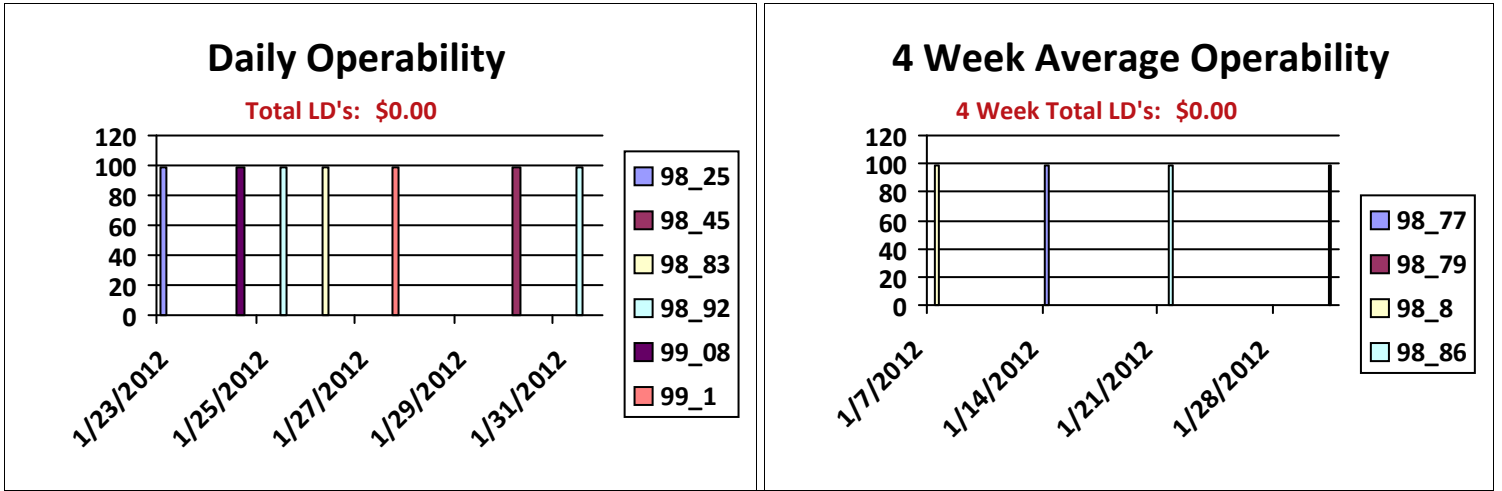
- includes CALL CENTER and DDOT reported problems that were transmitted to ACS
- excludes all Graffiti tickets as these do not affect operability / excludes duplicate CALLS
- excludes service requests that resulted in meter found operable (no repairs required)
- total meter inventory is based on the CURRENT meter inventory at the time of the report
- non-operable (non-working) meter count excludes duplicate service calls on the same day
- includes working District business days (Monday thru Friday) and excludes holidays

Contract Reference

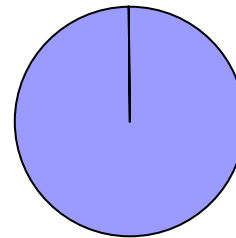
- Appendix J.3.11
- C.3.3.8
- H.12
- H.12.4.2
- H.12.5.2

1	2	3	4	5	6	7
8	9	10	11	12	13	14
15	16	17	18	19	20	21
22	23	24	25	26	27	28
29	30	31				

**Executive Dashboard**



### 90 Day Average Operability



1.19  
Not working

90 Day Total LD's: \$0.00

**Contract Baseline Required: 97 Operable**  
**Total District Single Space Parking Meters 14108**

Contract Rules Applied to Meter Operability Analysis:

- includes CALL CENTER and DDOT reported problems that were transmitted to ACS
- excludes all Graffiti tickets as these do not affect operability / excludes duplicate CALLS
- excludes service requests that resulted in meter found operable (no repairs required)
- total meter inventory is based on the CURRENT meter inventory at the time of the report
- non-operable (non-working) meter count excludes duplicate service calls on the same day
- includes working District business days (Monday thru Friday) and excludes holidays

Contract Reference

Appendix J.3.11  
C.3.3.8  
H.12  
H.12.4.2  
H.12.5.2