

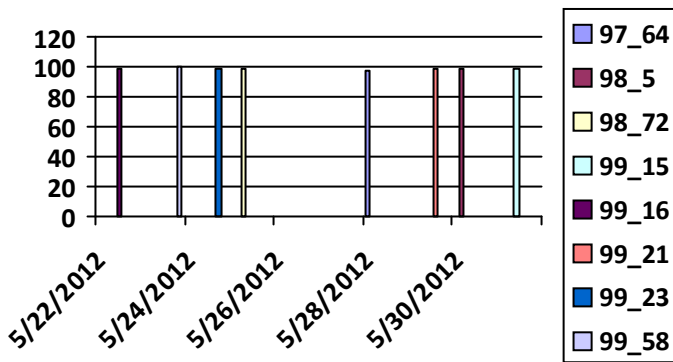
	1	2	3	4	5	
6	7	8	9	10	11	12
13	14	15	16	17	18	19
20	21	22	23	24	25	26
27	28	29	30	31		

Executive Dashboard

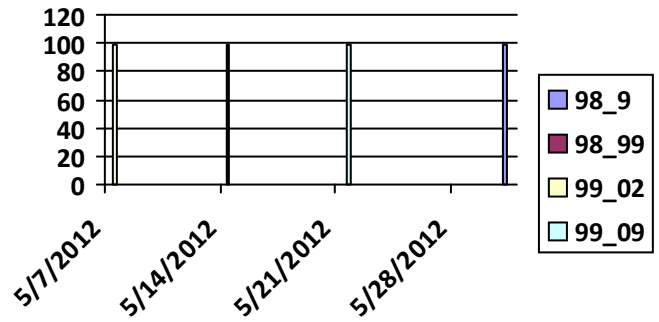
Single Space Meter Operability Analysis

Daily Operability		4 Week Average Operability		90 Day Overall Operability
Date	Operable	Week	Operable	
5/22/2012	99.16	5/7/2012	99.02	<p>Working: 98.99 %</p> <p>Not Working: 1.01 %</p>
5/23/2012	99.58	5/31/2012	98.90	
5/24/2012	99.23	5/21/2012	99.09	
5/25/2012	98.72	5/14/2012	98.99	
5/28/2012	97.64			
5/29/2012	99.21			
5/30/2012	98.50			
5/31/2012	99.15			

Daily Operability



4 Week Average



Contract Baseline Required: 97 Operable

Total District Single Space Parking Meters 14163

Contract Rules Applied to Meter Operability Analysis:

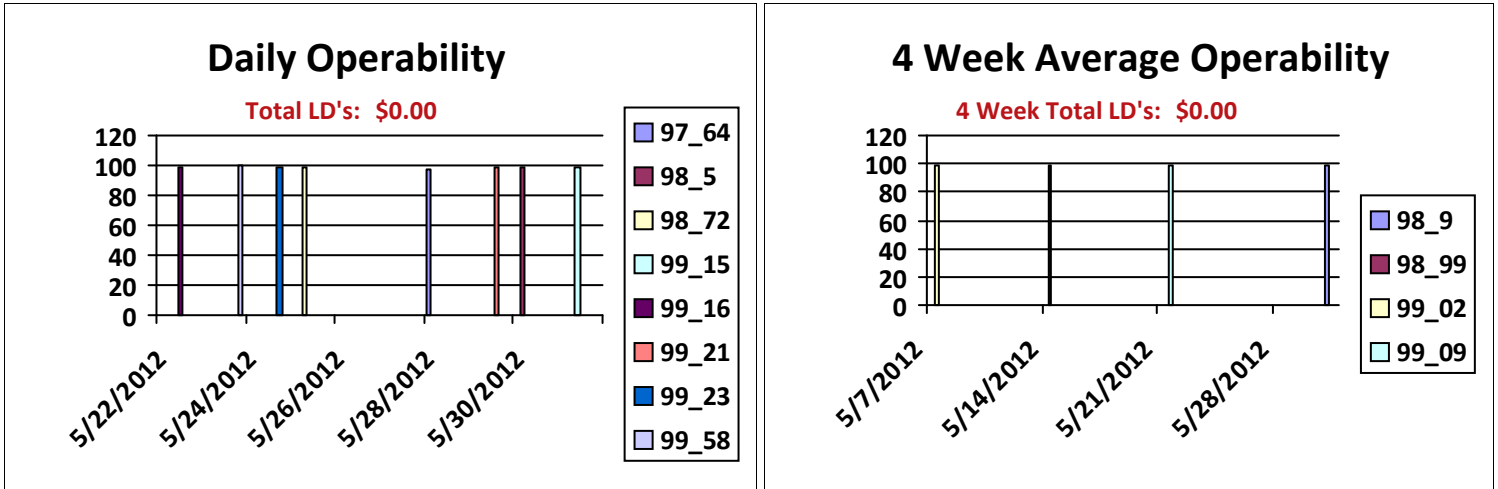
- includes CALL CENTER and DDOT reported problems that were transmitted to ACS
- excludes all Graffiti tickets as these do not affect operability / excludes duplicate CALLS
- excludes service requests that resulted in meter found operable (no repairs required)
- total meter inventory is based on the CURRENT meter inventory at the time of the report
- non-operable (non-working) meter count excludes duplicate service calls on the same day
- includes working District business days (Monday thru Friday) and excludes holidays

Contract Reference

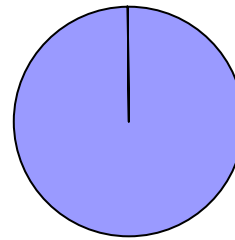
Appendix J.3.11
C.3.3.8
H.12
H.12.4.2
H.12.5.2

			1	2	3	4	5
6	7	8	9	10	11	12	13
14	15	16	17	18	19	20	21
22	23	24	25	26	27	28	29
30	31						

Executive Dashboard



90 Day Average Operability



1.01
Not working

90 Day Total LD's: \$0.00

Contract Baseline Required: 97 Operable
Total District Single Space Parking Meters 14163

Contract Rules Applied to Meter Operability Analysis:

- includes CALL CENTER and DDOT reported problems that were transmitted to ACS
- excludes all Graffiti tickets as these do not affect operability / excludes duplicate CALLS
- excludes service requests that resulted in meter found operable (no repairs required)
- total meter inventory is based on the CURRENT meter inventory at the time of the report
- non-operable (non-working) meter count excludes duplicate service calls on the same day
- includes working District business days (Monday thru Friday) and excludes holidays

Contract Reference

Appendix J.3.11
C.3.3.8
H.12
H.12.4.2
H.12.5.2