

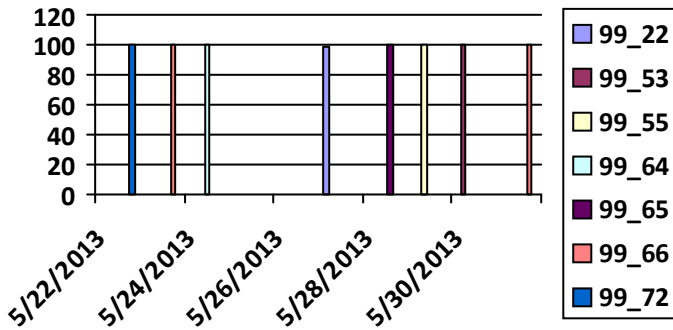
				1	2	3	4
5	6	7	8	9	10	11	12
12	13	14	15	16	17	18	19
19	20	21	22	23	24	25	26
26	27	28	29	30	31		

Executive Dashboard

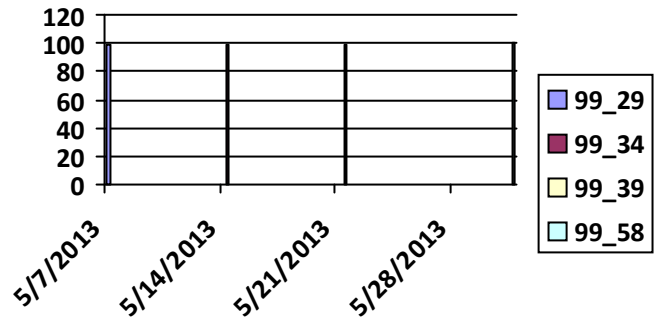
Single Space Meter Operability Analysis

Daily Operability		4 Week Average Operability		90 Day Overall Operability
Date	Operable	Week	Operable	
5/22/2013	99.72	5/7/2013	99.29	<p>Working: 99.30 %</p> <p>Not Working: 0.70 %</p>
5/23/2013	99.66	5/31/2013	99.58	
5/24/2013	99.64	5/21/2013	99.39	
5/27/2013	99.22	5/14/2013	99.34	
5/28/2013	99.65			
5/29/2013	99.55			
5/30/2013	99.53			
5/31/2013	99.66			

Daily Operability



4 Week Average



Contract Baseline Required: 97 Operable

Total District Single Space Parking Meters 14553

Contract Rules Applied to Meter Operability Analysis:

- includes CALL CENTER and DDOT reported problems that were transmitted to ACS
- excludes all Graffiti tickets as these do not affect operability / excludes duplicate CALLS
- excludes service requests that resulted in meter found operable (no repairs required)
- total meter inventory is based on the CURRENT meter inventory at the time of the report
- non-operable (non-working) meter count excludes duplicate service calls on the same day
- includes working District business days (Monday thru Friday) and excludes holidays

Contract Reference

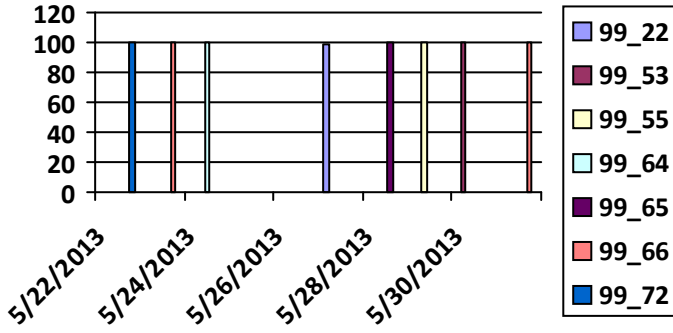
- Appendix J.3.11
- C.3.3.8
- H.12
- H.12.4.2
- H.12.5.2

				1	2	3	4
5	6	7	8	9	10	11	11
12	13	14	15	16	17	18	18
19	20	21	22	23	24	25	25
26	27	28	29	30	31		

Executive Dashboard

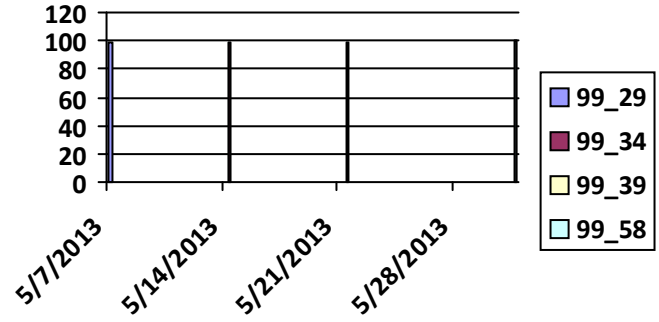
Daily Operability

Total LD's: \$0.00

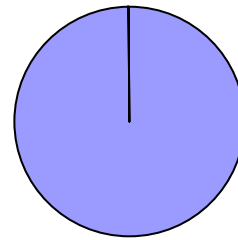


4 Week Average Operability

4 Week Total LD's: \$0.00



90 Day Average Operability



0.7

Not working

90 Day Total LD's: \$0.00

Contract Baseline Required: 97 Operable

Total District Single Space Parking Meters 14553

Contract Rules Applied to Meter Operability Analysis:

- includes CALL CENTER and DDOT reported problems that were transmitted to ACS
- excludes all Graffiti tickets as these do not affect operability / excludes duplicate CALLS
- excludes service requests that resulted in meter found operable (no repairs required)
- total meter inventory is based on the CURRENT meter inventory at the time of the report
- non-operable (non-working) meter count excludes duplicate service calls on the same day
- includes working District business days (Monday thru Friday) and excludes holidays

Contract Reference

- Appendix J.3.11
- C.3.3.8
- H.12
- H.12.4.2
- H.12.5.2