

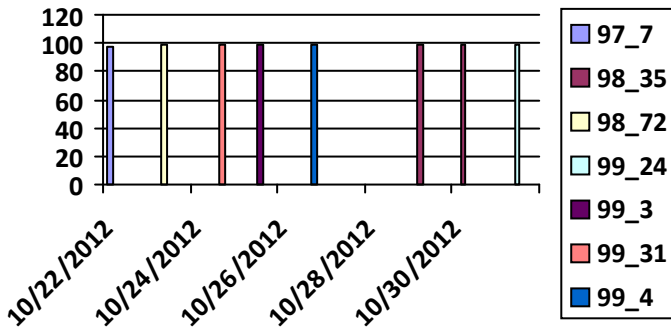
	1	2	3	4	5	6
7	8	9	10	11	12	13
14	15	16	17	18	19	20
21	22	23	24	25	26	27
28	29	30	31			

Executive Dashboard

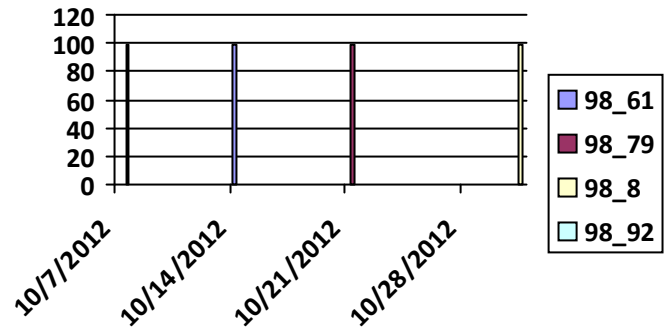
**Single Space Meter Operability Analysis**

Daily Operability		4 Week Average Operability		90 Day Overall Operability
Date	Operable	Week	Operable	
10/22/2012	97.70	10/7/2012	98.92	<p><b>Working: 99.24 %</b></p> <p><b>Not Working: 0.76 %</b></p>
10/23/2012	98.72	10/31/2012	98.80	
10/24/2012	99.31	10/21/2012	98.79	
10/25/2012	99.30	10/14/2012	98.61	
10/26/2012	99.40			
10/29/2012	98.35			
10/30/2012	98.35			
10/31/2012	99.24			

Daily Operability



4 Week Average



Contract Baseline Required: 97 Operable

Total District Single Space Parking Meters 14589

Contract Rules Applied to Meter Operability Analysis:

- includes CALL CENTER and DDOT reported problems that were transmitted to ACS
- excludes all Graffiti tickets as these do not affect operability / excludes duplicate CALLS
- excludes service requests that resulted in meter found operable (no repairs required)
- total meter inventory is based on the CURRENT meter inventory at the time of the report
- non-operable (non-working) meter count excludes duplicate service calls on the same day
- includes working District business days (Monday thru Friday) and excludes holidays

Contract Reference

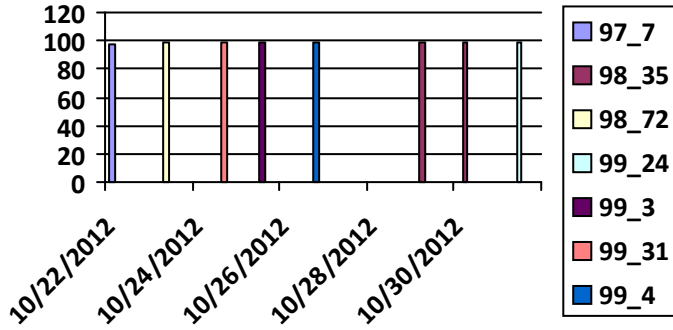
- Appendix J.3.11
- C.3.3.8
- H.12
- H.12.4.2
- H.12.5.2

	1	2	3	4	5	6
7	8	9	10	11	12	13
14	15	16	17	18	19	20
21	22	23	24	25	26	27
28	29	30	31			

**Executive Dashboard**

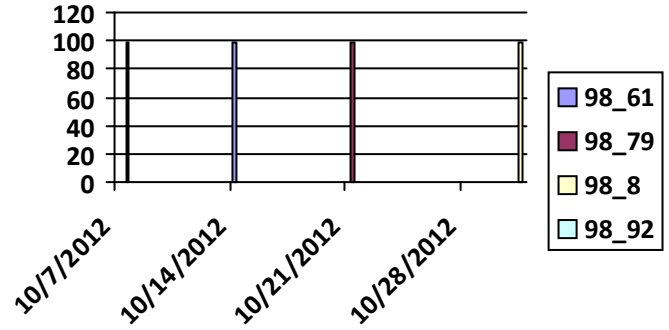
**Daily Operability**

Total LD's: \$0.00

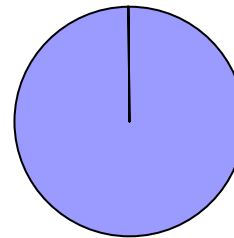


**4 Week Average Operability**

4 Week Total LD's: \$0.00



**90 Day Average Operability**



0.76

Not working

90 Day Total LD's: \$0.00

**Contract Baseline Required: 97 Operable**

**Total District Single Space Parking Meters 14589**

Contract Rules Applied to Meter Operability Analysis:

- includes CALL CENTER and DDOT reported problems that were transmitted to ACS
- excludes all Graffiti tickets as these do not affect operability / excludes duplicate CALLS
- excludes service requests that resulted in meter found operable (no repairs required)
- total meter inventory is based on the CURRENT meter inventory at the time of the report
- non-operable (non-working) meter count excludes duplicate service calls on the same day
- includes working District business days (Monday thru Friday) and excludes holidays

Contract Reference

- Appendix J.3.11
- C.3.3.8
- H.12
- H.12.4.2
- H.12.5.2